



R·STONE

novacolor™
I colori dell'Architettura



R-Stone è un sistema decorativo per interni ed esterni, composto dai seguenti prodotti:

FONDI

- R-Stone Fondo

FINITURE

- R-Stone Rosso, Verde, Blu e Perla
- R-Stone Metal Silver e Gold

APPLICAZIONE

Applicare con spatola inox due mani di R-Stone Fondo.

A supporto asciutto, applicare in due mani, uno dei prodotti R-Stone finiture. È possibile utilizzare spatola inox, spugna e pennello a seconda dell'effetto desiderato.

RESE

R-Stone Fondo: 1 kg/m² nei due strati

R-Stone Rosso, Verde, Blu, Perla, Metal: 8-10 m²/l nei due strati

Per maggiori informazioni, consultare la scheda tecnica.

R-Stone is a decorative system for interiors and exteriors, including the following products:

BASE COATS

- R-Stone Fondo

TOP COATS

- R-Stone Rosso, Verde, Blu and Perla
- R-Stone Metal Silver and Gold

APPLICATION

Apply, with a stainless steel trowel, two layers of R-Stone Fondo.

Once the substrate is dry, apply two layers of one of the products R-Stone top coats. It is possible to use a stainless steel trowel, sponge and brush, depending on the desired effect.

YIELD

R-Stone Fondo: 1 Kg/m² in two layers

R-Stone Rosso, Verde, Blu, Perla, Metal: 8-10 m²/l in two layers

For more information please check the technical data sheet.



R-Stone est un système décoratif pour intérieurs et extérieurs, composé des produits suivants:

FONDS

- R-Stone Fondo

FINITIONS

- R-Stone Rosso, Verde, Blu et Perla
- R-Stone Metal Gold et Silver

APPLICATION

Appliquer avec truelle inox deux couches de R-Stone Fondo.
Sur support sec appliquer en deux couches une des finitions R-Stone.
Il est possible d'utiliser la truelle inox, l'éponge ou le pinceau, selon l'effet final désiré.

RENDEMENTS

R-Stone Fondo: 1 Kg/m² en deux couches
R-Stone Rosso, Verde, Blu, Perla, Metal: 8-10 m²/l en deux couches

Pour toutes ultérieures informations consulter la fiche technique.

R-Stone ist eine Dekorative Beschichtung für Innen- und Außenbereiche, zusammengesetzt aus:

GRUNDIERUNGEN

- R-Stone Fondo

OBERFLÄCHEN

- R-Stone Rosso, Verde, Blu und Perla
- R-Stone Metal Gold und Silver

VORBEREITUNG

Zwei Schichten R-Stone Fondo mit Stahlspachtel auftragen.
Nach vollständiger Trocknung, zwei Schichten R-Stone auftragen.
Mit Stahlspachtel, Schwamm oder Pinsel, die R-Stone auftragen, je nach dem gewünschten Effekt.

ERGIEBIGKEIT

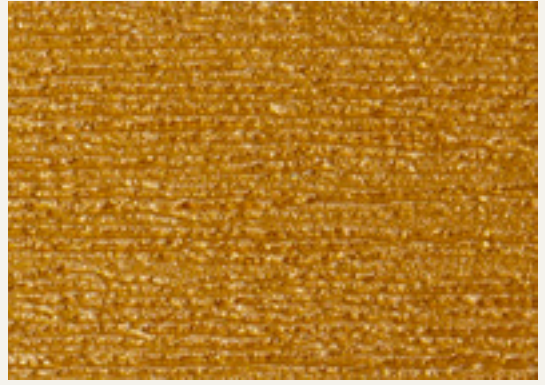
R-Stone Fondo: 1 kg/m² in den beiden Schichten
R-Stone Rosso, Verde, Blu, Perla, Metal: 8-10 m²/l in den beiden Schichten

Für weitere Info bitte siehe technisches Merkblatten.





R·STONE



R-STONE FONDO BIANCO + R-STONE METAL GOLD



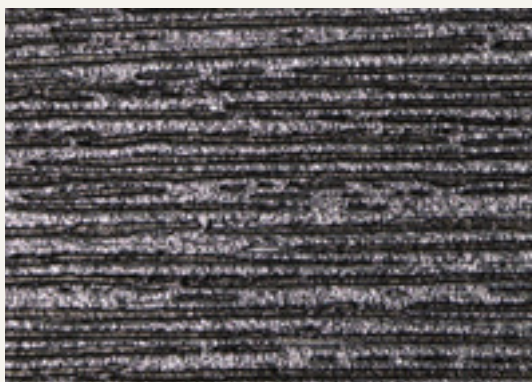
R-STONE FONDO 17300 + R-STONE METAL SILVER + R-STONE PERLA 17400



R-STONE FONDO 17301 + R-STONE METAL GOLD
+ R-STONE PERLA 17401



R-STONE FONDO BIANCO + R-STONE METAL GOLD
+ R-STONE PERLA 17402



R-STONE FONDO 17300 + R-STONE PERLA 17402
+ R-STONE METAL SILVER



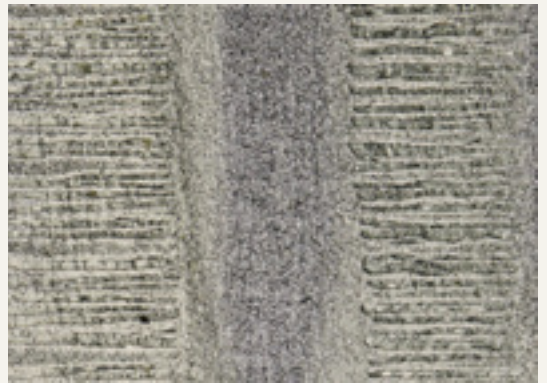
R-STONE FONDO 17302 + R-STONE METAL SILVER



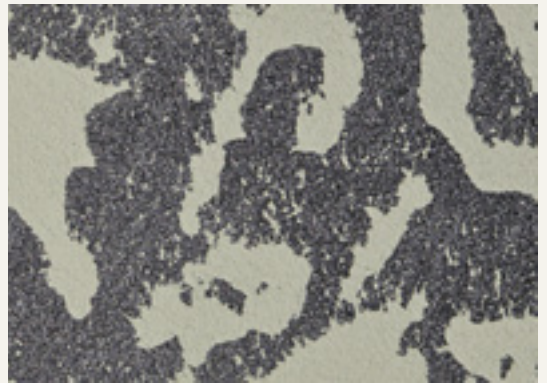
R-STONE FONDO BIANCO + R-STONE ROSSO + R-STONE PERLA 17402



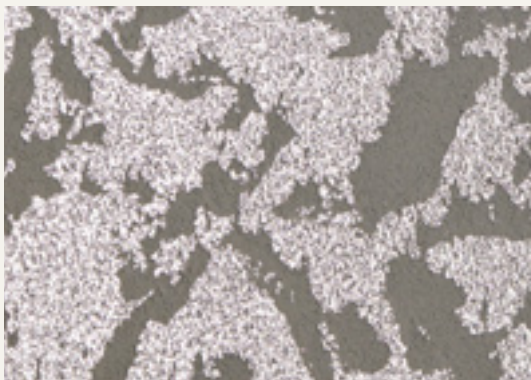
R-STONE FONDO BIANCO + R-STONE PERLA 17406 + R-STONE PERLA 17405



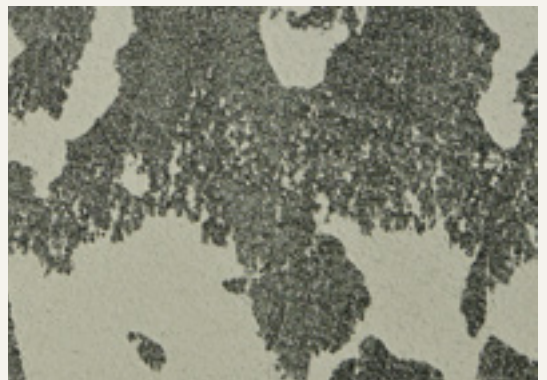
R-STONE FONDO BIANCO + R-STONE BLU + R-STONE PERLA 17405



R-STONE FONDO 17303 + R-STONE BLU



R-STONE FONDO 17302 + R-STONE METAL SILVER

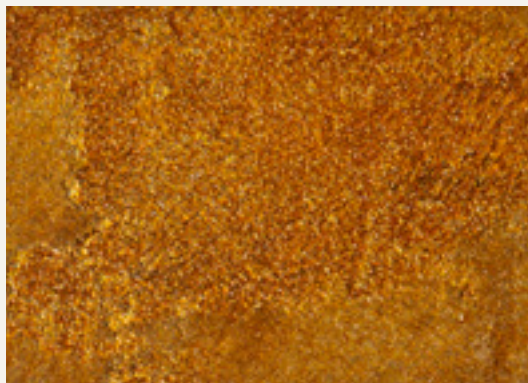


R-STONE FONDO 17303 + R-STONE PERLA 17405



Le tonalità qui riprodotte, pur avvicinandosi a quelle di fornitura, sono indicative.
Per una corretta lettura dei colori si raccomanda di consultare questa cartella alla luce solare.

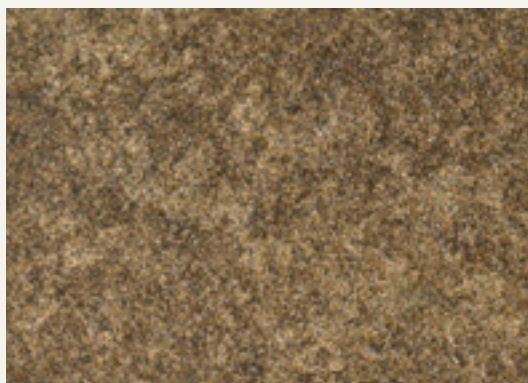
*Colours and patterns illustrated are for guidance only.
The exact pattern, colours and shades may vary from those shown.*



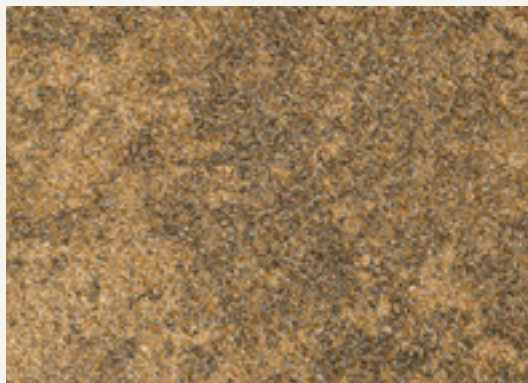
R-STONE FONDO 17302 + R-STONE METAL GOLD
+ R-STONE ROSSO



R-STONE FONDO 17302 + R-STONE METAL SILVER + R-STONE VERDE



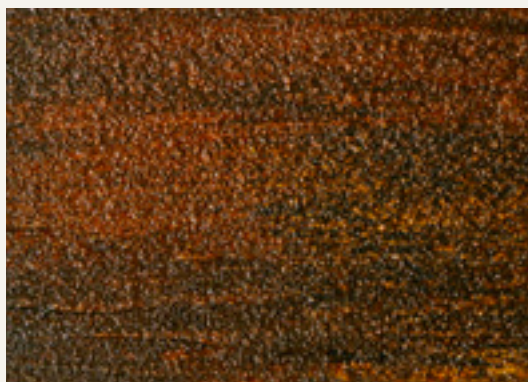
R-STONE FONDO 17301 + R-STONE PERLA 17404
+ R-STONE PERLA 17403



R-STONE FONDO 17301 + R-STONE PERLA 17401
+ R-STONE PERLA 17400



R-STONE FONDO 17302 + R-STONE ROSSO



R-STONE FONDO 17304 + R-STONE FONDO 17305
+ R-STONE ROSSO + R-STONE PERLA 17402

www.novacolor.it




freedot

01/2019

N000096

novacolorTM
I colori dell'Architettura

NOVACOLOR srl - 47122 Forlì - Italia
Tel +39 0543 401840 - fax +39 0543 414585
Via U. Aldrovandi, 10 - info@novacolor.it

 NOVACOLOR is committed to reduce the environmental impact by producing friendly materials.

Made in Italy

**AZIENDA CON SISTEMA
DI GESTIONE QUALITÀ
CERTIFICATO DA DNV GL
= ISO 9001 =**

**COMPANY WITH
QUALITY SYSTEM
CERTIFIED BY DNV GL
= ISO 9001 =**